



# Automotive Vents

FOR DRIVETRAIN & DRIVELINE COMPONENTS

## Single venting solution engineered to simplify design challenges and reduce overall costs

### VENTING FOR PROTECTION

Drivetrain and driveline components are constantly challenged by extremes of weather, submersion or contaminants. To maintain component reliability requires high-performance venting.

GORE® Automotive Vents for Drivetrain & Driveline Components deliver high performance in a compact design. It offers a single solution to multiple challenges in designing, validating, installing and protecting drivetrain and driveline components.

### RELY ON GORE® AUTOMOTIVE VENTS FOR DRIVETRAIN & DRIVELINE COMPONENTS

Our Series AVS 41 (Product Number VE2048) can help you:

#### Improve protection

Unlike other methods, ours delivers reliable venting performance that effectively blocks contaminants – like water, dust and dirt – that can degrade performance.

#### Preserve seal performance

Only our vents have the breathable GORE™ Membrane. It effectively equalizes pressure under both normal and extreme operating conditions, averting stress on seals.

#### Reduce weight

When you replace conventional vent tubes with these vents, you can achieve significant weight savings.

#### Simplify design

Our compact vents “design-in” quickly and easily, with fewer parts, space constraints and engineering challenges than other methods. There is no need for complicated routing; no need to keep our vent opening “above the waterline.”

#### Streamline validation

These waterproof vents can eliminate vent-related wading test “fails” and associated engineering redesign time.

#### Save on installation

Because our vents are fast and easy to install, you can save both time and labor costs.



### REALIZE THE BENEFITS OF GORE® AUTOMOTIVE VENTS FOR DRIVETRAIN & DRIVELINE COMPONENTS:

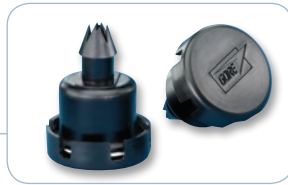
- **Enhance component reliability** with a venting solution that reliably blocks water, dust and dirt.
- **Reduce vehicle weight** with this compact vent construction.
- **Reduce time and labor costs** with this standard part that can streamline design, validation and installation.
- **Meet global OEM standards** including water wading, vehicle rollover and fluid containment.
- **Access Gore global resources**, dedicated application support, and expertise in materials technology.



# Automotive Vents

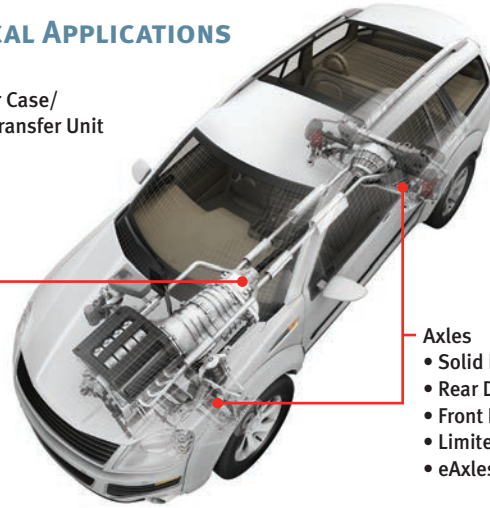
FOR DRIVETRAIN & DRIVELINE COMPONENTS

## PRODUCT INFORMATION



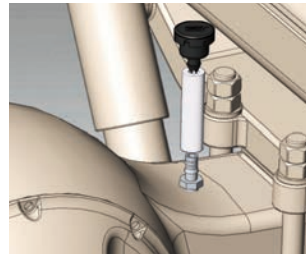
## TYPICAL APPLICATIONS

Transfer Case/  
Power Transfer Unit

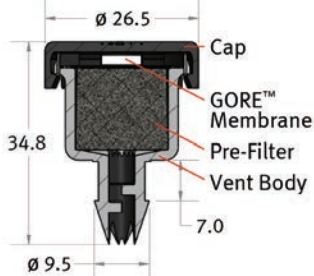


- Axles**
- Solid Beam
  - Rear Drive Module
  - Front Drive Module
  - Limited-Slip Coupling
  - eAxles

## VENT POSITIONING AND INSTALLATION



There are several design considerations that must be addressed to ensure successful integration of GORE® Automotive Vents for Drivetrain and Driveline Components. Please contact a Gore representative to discuss your application's unique requirements and needs.

<b>Product Name</b> (order number for samples)	AVS 41
<b>Product Number</b> (order number for series production)	VE2048
<b>Product Performance Characteristics</b>	
Minimum Airflow at 70 mbar (1 psi)	64 l/h
Water Entry Pressure (assembly)	> 345 mbar (> 5.0 psi) for 60 seconds
Operating Temperature	-40 °C to +125 °C
Membrane Characteristic	Hydrophobic and oleophobic
<b>Materials of Construction</b>	
Cap Material	PA6.6 Impact Modified
Body Material	PA6.6 – GF33
Membrane Type	GORE™ Membrane Oleophobic ePTFE
Pre-Filter Type	Sorbent
<b>Vent Design and Dimensions</b>	
Units are in mm	

## ABOUT W. L. GORE & ASSOCIATES

Well-known for its waterproof, breathable GORE-TEX® fabric, Gore is a technology-driven company focused on product innovation. We engineer creative solutions that deliver reliable performance fabrics and implantable medical devices to industrial manufacturing components and aerospace electronics. Gore products remain at the forefront of creative solutions

because they are engineered especially for challenging applications where other products fail. Founded in 1958, Gore employs approximately 10,000 associates in 30 countries worldwide.

Learn more at [gore.com](http://gore.com).

## INTERNATIONAL CONTACTS

Australia	+61 2 9473 6800	Mexico	+52 81 8288 1281
Benelux	+49 89 4612 2211	Scandinavia	+46 31 706 7800
China	+86 21 5172 8299	Singapore	+65 6733 2882
France	+33 1 5695 6565	South America	+55 11 5502 7800
Germany	+49 89 4612 2211	Spain	+34 93 480 6900
India	+91 22 6768 7000	Taiwan	+886 2 2173 7799
Italy	+39 045 6209 240	United Kingdom	+44 1506 460123
Japan	+81 3 6746 2570	USA	+1 410 506 7812
Korea	+82 2 393 3411		

FOR INDUSTRIAL USE ONLY. Not for use in food, drug, cosmetic or medical device manufacturing, processing, or packaging operations.

All technical information and advice given here are based on Gore's previous experiences and/or test results. Gore gives this information to the best of its knowledge, but assumes no legal responsibility. Customers are asked to check the suitability and usability in the specific application, since the performance of the product can only be judged when all necessary operating data are available. The above information is subject to change and is not to be used for specification purposes. Gore's terms and conditions of sale apply to the sale of the products by Gore.

W. L. Gore & Associates, Inc. is certified according to ISO TS 16949, ISO 9001 and ISO 14001 standards. GORE and designs are trademarks of W. L. Gore & Associates.

© 2017 W. L. Gore & Associates, Inc.

## W. L. Gore & Associates, Inc.

401 Airport Road • Elkton, MD 21921 • USA  
Phone: +1 410 506 7812 (USA) • Toll-free: +1 800 523 4673 (USA)  
Fax: +1 410 506 8749 • Email: [automotive.us@wlgore.com](mailto:automotive.us@wlgore.com)

[gore.com/autovents](http://gore.com/autovents)

