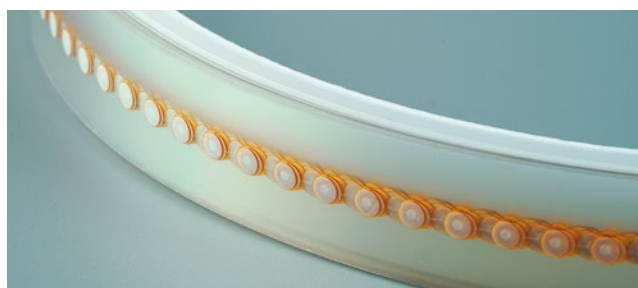


# Product Information and Installation Guideline

Technical challenges during high-volume assembly of printed circuit boards can jeopardize the integrity of MEMS microphones — leading to performance degradation, significant yield losses and higher manufacturing costs.

## Style 100 — for circuit board assembly

- Can be installed over the top of a top-port microphone or on the circuit board opposite a bottom-port microphone.
- Available in reel packaging.
- Enables seamless installation with high-speed SMT pick and place machines.



### Product Performance Characteristics

Part number	VP0001MPX
Membrane Type	ePTFE
Membrane Characteristic	Hydrophobic
Membrane Color	White
Min. Airflow	10 L/hr @ 70 mbar
Adhesive Type	Silicone based
Adhesive Temp. Resistance	Max. 260 °C for 3 mins

### Vent Dimensions

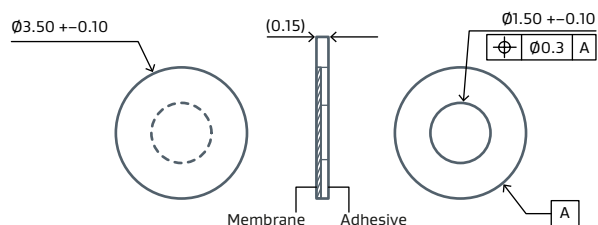
Outer/Inner Diameter	3.5 mm/1.5 mm
Typical Thickness	0.15 mm

### Reel Dimensions

Pitch <sup>1</sup>	5.5 mm
Core Inner Diameter <sup>2</sup>	15.24 cm
Quantity per Reel	2000 pieces

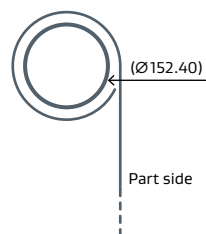
### Design

#### Dimensions for Vent

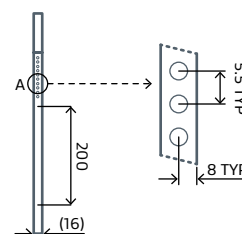


Units are in mm

#### Reel Cross Section View

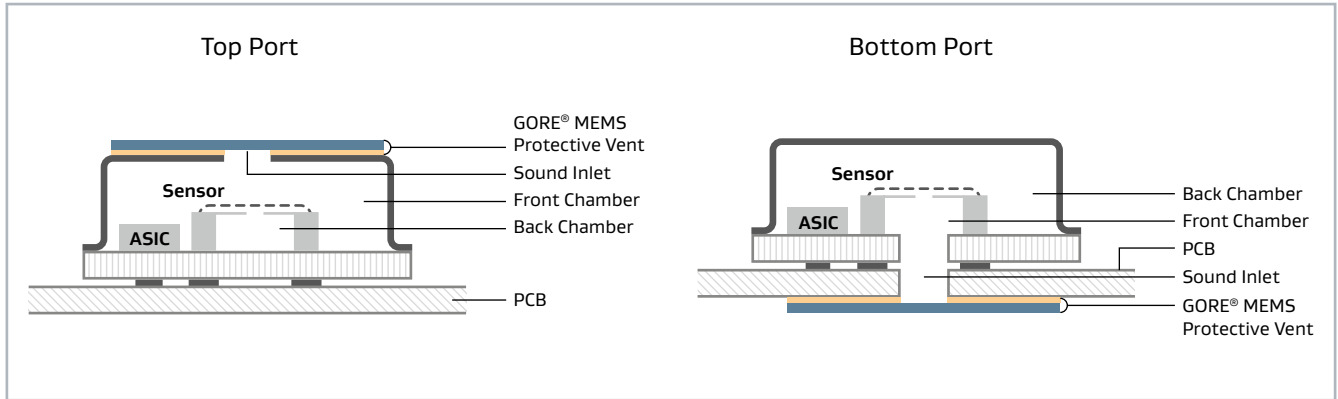


#### Vents on the Reel Top View

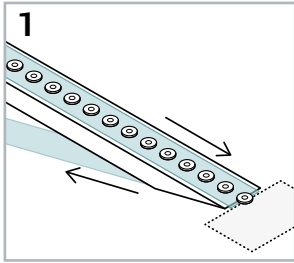


1. The distance between each vent on the liner  
2. The diameter of the reel

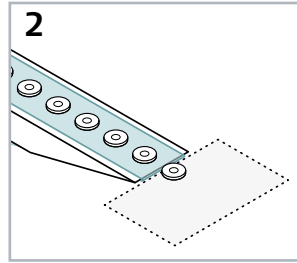
## Placement Examples



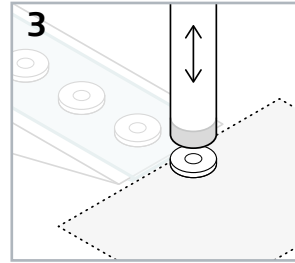
## Installation guideline



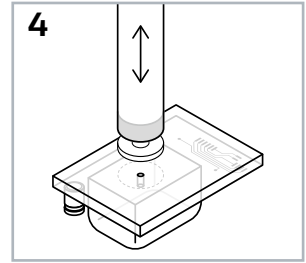
As the reel of GORE® Vents moves through the feeder, one by one each vent is released from the liner onto the platform.



As each vent moves onto the platform, an infrared sensor stops the feeder to ensure the vent is placed in the correct position.



A vacuum nozzle uses suction to pick up the GORE Vent.



The vacuum nozzle automatically moves into position and attaches the vent to the port.

### FOR INDUSTRIAL USE ONLY. Not for use in food, drug, cosmetic or medical device manufacturing, processing, or packaging operations.

All technical information and advice given here is based on Gore's previous experiences and/or test results. Gore gives this information to the best of its knowledge, but assumes no legal responsibility. Customers are asked to check the suitability and usability in the specific application, since the performance of the product can only be judged when all necessary operating data are available. The above information is subject to change and is not to be used for specification purposes. Gore's terms and conditions of sale apply to the sale of the products by Gore.

GORE, *Together, improving life* and designs are trademarks of W. L. Gore & Associates. © 2022 W. L. Gore & Associates, Inc.