

Storage and Handling Recommendations for GORE® Packaging Vents: Plug-In Vents

Gore is committed to providing high quality products that maximize application performance. To ensure the long shelf life of GORE® Plug-In Vents, the following storage and handling recommendations are advised:

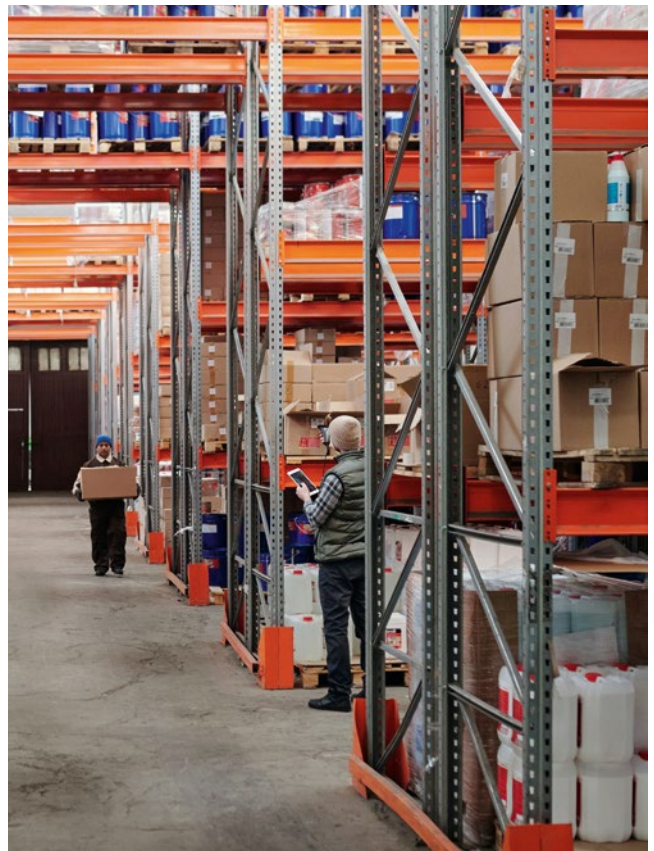
Storage Recommendations

GORE® Plug-In Vents consist of PE (Polyethylene), PP (Polypropylene) and PTFE (Polytetrafluoroethylene). These polymers are considered stable when kept under normal storage conditions. Therefore, it is recommended to:

- Store all products in their original packaging in a clean environment.
- Keep the vents stored in a location that does not experience extreme temperatures and temperature changes (recommended range: 10 °C to 45 °C).

Shelf life

If storage and handling recommendations are followed correctly, no changes in the venting performance of GORE® Plug-In Vents after two years of shipment day.

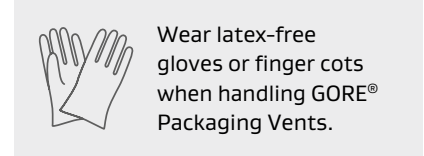
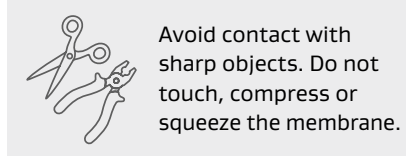


Handling Guidelines for GORE® Plug-In Vents

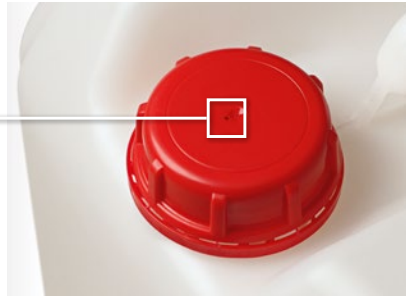
Customers are asked to check the suitability and usability in the specific application, since the performance of the product can only be judged when all necessary operating data are available.

When GORE® Plug-In Vents are used, the following guidelines are recommended:

Please note that the membrane may be damaged if not handled correctly, which can lead to leaks. Therefore, please follow these handling recommendations:



The venting holes in the cap should meet the recommended dimensions ($\varnothing 2$ mm).



Venting hole $\varnothing 2 \pm 0,2$ mm



Missing venting holes in cap

The venting holes must not be blocked (e.g. when piling up containers, by splints, dirt, liquid or by wrapping the containers in foil).



Venting holes blocked by foil

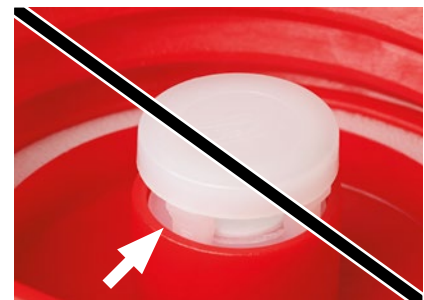


Venting holes blocked by liquid

Please ensure that the press-fit dimensions correspond to the recommendations in the installation guidelines. The clamping edge should not be higher than specified. Otherwise, liquid could pool in front of the membrane and lead to a reduction of the venting performance.



Clamping edge as recommended



Clamping edge too high

FOR INDUSTRIAL USE ONLY. Not for use in food, drug, cosmetic or medical device manufacturing, processing, or packaging operations.

All technical information and advice given here are based on Gore's previous experiences and/or test results. Gore gives this information to the best of its knowledge, but assumes no legal responsibility. Customers are asked to check the suitability and usability in the specific application, since the performance of the product can only be judged when all necessary operating data are available. The above information is subject to change and is not to be used for specification purposes. Gore's terms and conditions of sale apply to the sale of the products by Gore.

GORE, *Together, improving life* and designs are trademarks of W. L. Gore & Associates. © 2023 W. L. Gore & Associates GmbH