



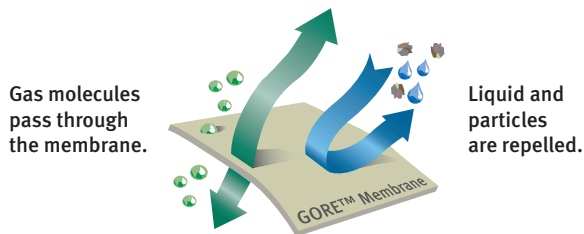
# GORE® Turbine Filters

*More Power, Less Wear*

## Pulse Panel Filter – E12

### MORE POWER

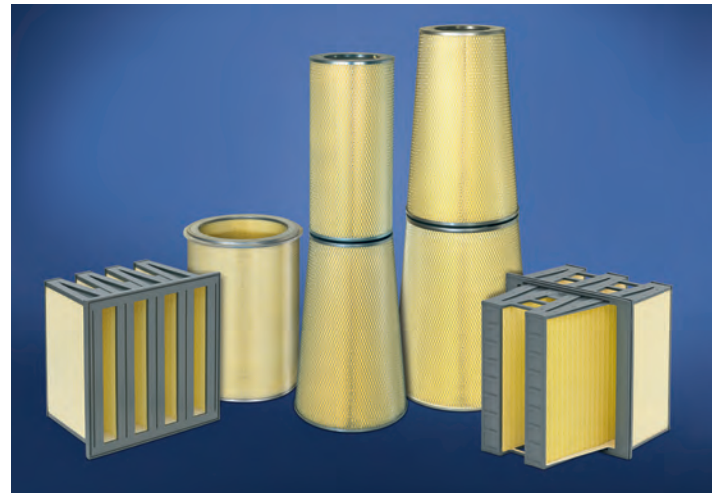
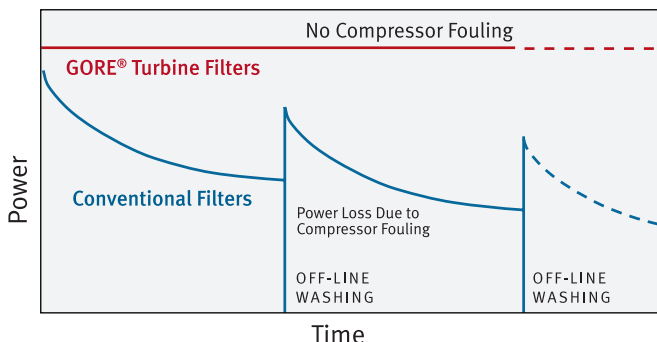
GORE® Turbine Filters optimize power output by eliminating performance reducing deposits in your compressor section. Their outstanding H12/E12 filtration efficiency keeps out at least 99.5% of contaminants at the most penetrating particle size (~0.1 µm). This stops power losses while reducing your fuel consumption and associated CO<sub>2</sub> and NO<sub>x</sub> emissions. Machine availability and reliability are also significantly increased because there is no need to stop the turbine for off-line compressor washing.



### LESS WEAR

GORE® Turbine Filters significantly reduce your maintenance costs while increasing compressor and turbine lifetimes. Unlike current air intake filters, they capture at least 99.5% of atmospheric particles, and have a unique patented filter media that is waterproof and provides reliable protection from corrosive salts. This reduces unexpected failures and major outages by preventing both fine and corrosive particulates from reaching the engine. GORE® Turbine Filters also directly replace your existing filters with no modifications required to filter housing.

Effect of Compressor Fouling on Power Output

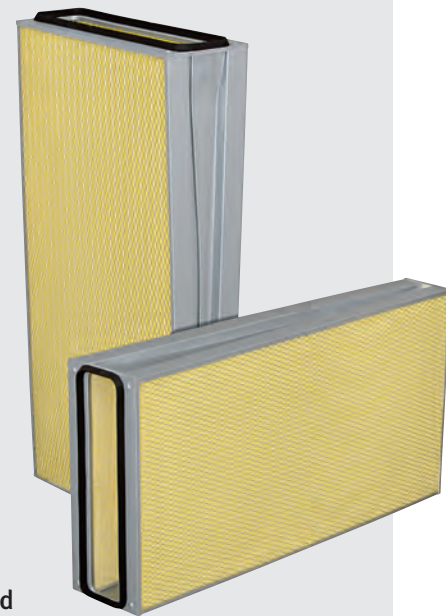


### KEY FEATURES

- >99.5% Filtration Efficiency at MPPS (H12/E12)
- Very Low Initial Pressure Drop
- Watertight and Salt Repellent

### KEY BENEFITS

- Higher Power Output
- Increased Turbine Availability
- No Filter House Modifications Required
- Less Fuel Costs
- Less Maintenance Costs





# GORE® Turbine Filters

More Power, Less Wear

## Construction Materials

|                   |   |
|-------------------|---|
| Filter Media      | Fully synthetic composite with ePTFE membrane |
| Endcaps           | Galvanized steel                              |
| In-/Outside Liner | Galvanized steel                              |
| Potting           | Polyurethane                                  |
| Gasket            | EPDM rubber                                   |

## Application Performance

|                       |  |
|-----------------------|--|
| Efficiency            | H12/E12 according to EN 1822<br>Min. 99.5 % @ MPPS |
| Initial Pressure Drop | 230 Pa @ 2500 m <sup>3</sup> /h                    |
| Temperature Range     | -40 °C to +65 °C                                   |
| Humidity Range        | 0 to 100 % relative humidity                       |
| Flame Retardance      | E d2 according to EN 13501                         |

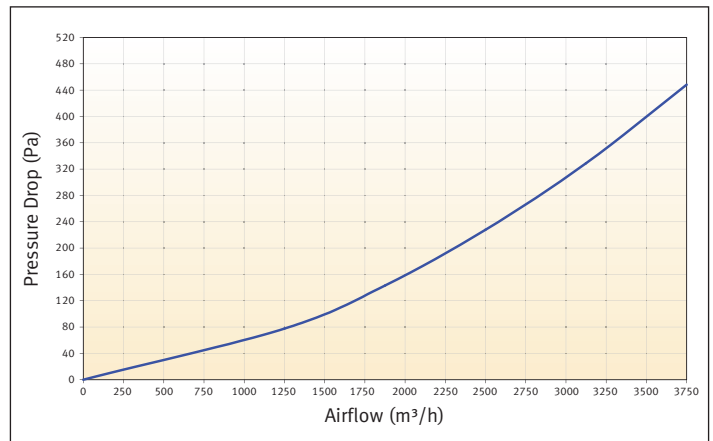
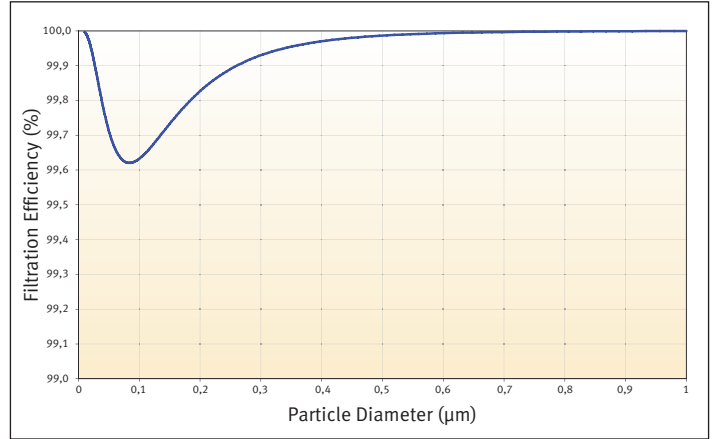
## Dimensions

|        |         |
|--------|---------|
| Length | 1229 mm |
| Height | 610 mm  |
| Width  | 245 mm  |

## Operational Mode

Pulse cleanable and static

## Highest Efficiency at Lowest Pressure Drop



All data expressed as typical values. Please contact W. L. Gore & Associates directly to confirm current information and to verify data for a specific part number. Specifications are subject to change.

Contact a Gore specialist for assistance in determining the appropriate GORE® Turbine Filter for your specific application.

### FOR INDUSTRIAL USE ONLY.

**Not for use in food, drug, cosmetic or medical device manufacturing, processing, or packaging operations.**

[www.gore.com/turbinefilters](http://www.gore.com/turbinefilters)

E-Mail: [turbinefilters@wlgore.com](mailto:turbinefilters@wlgore.com)

© GORE and designs are trademarks of W. L. Gore & Associates, Inc.  
© 2013-2017 W. L. Gore & Associates

## W. L. Gore & Associates

**Americas**  
W. L. Gore & Associates, Inc.  
101 Lewisville Road  
Elkton, MD 21921  
USA  
Phone: +1 410 392 3300  
Fax: +1 410 398 6624

**Europe**  
W. L. Gore & Associates GmbH  
Wernher-von-Braun-Strasse 18  
D-85640 Putzbrunn  
Germany  
Phone: +49 89 4612-2211  
Fax: +49 89 4612-2302

**Middle East**  
W. L. Gore & Associates GmbH Middle East - Abu Dhabi  
P.O. Box 11 44 70  
Abu Dhabi  
UAE  
Phone: +971 2 5089444  
Fax: +971 2 5089445

