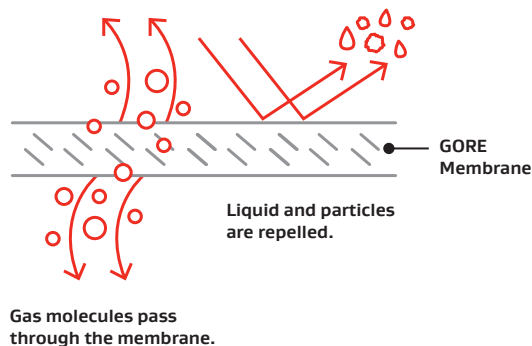


HYDROPHOBIC E12 EPA/HEPA PULSE PANEL FILTER WITH MEMBRANE MEDIA

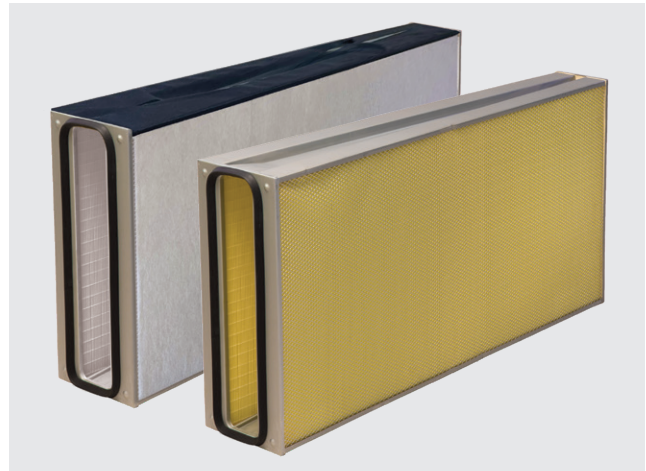
Maintain High Power Output

GORE® Turbine Filters optimize power output by eliminating performance reducing deposits in your compressor section. Their outstanding E12 filtration efficiency keeps out at least 99.5 % of contaminants at the most penetrating particle size ($\sim 0.1 \mu\text{m}$). This stops power losses while reducing your fuel consumption and associated CO_2 and NO_x emissions. Machine availability and reliability are also significantly increased because there is no need to stop the turbine for off-line compressor washing.



Less Wear

GORE® Turbine Filters significantly reduce your maintenance costs while increasing compressor and turbine lifetimes. Unlike current air intake filters, they have a unique patented filter media that is waterproof and provides reliable protection from corrosive salts. This reduces unexpected failures and major outages by preventing both fine and corrosive particulates from reaching the engine. GORE® Turbine Filters also directly replace your existing filters with no modifications required to filter housing.



Key Features

- E12 filtration efficiency $\geq 99.5\%$ at MPPS
- Hydrophobic membrane prevents water ingress
- Stops penetration of particles and dissolved salts
- High burst pressure
- Proven lifetime
- Low initial pressure drop

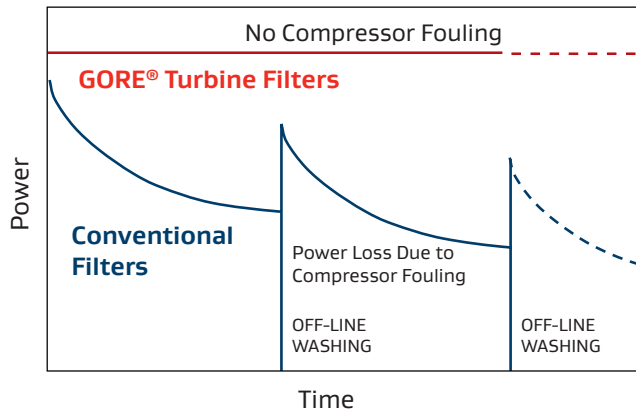
Key Benefits

- Eliminates compressor fouling and associated power loss
- Reduces turbine wear
- Eliminates off-line water washings
- Maintains consistent low heat rate
- Reduces salt induced corrosion

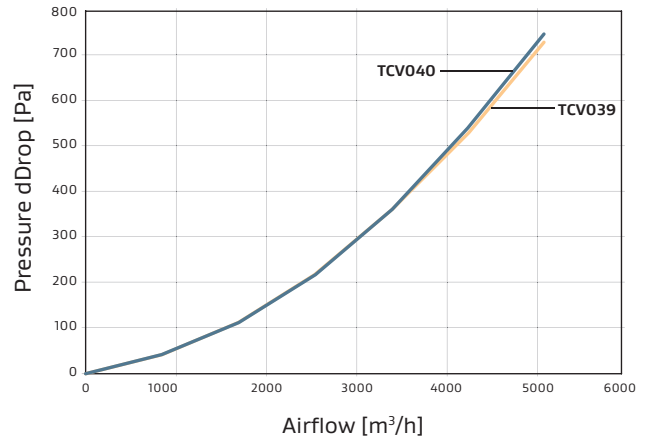
GORE® Turbine Filters

More Power, Less Wear

Effect of Compressor Fouling on Power Output



Highest Efficiency at Lowest Pressure Drop



Construction Materials

Filter Media	Fully synthetic composite with ePTFE membrane
End Caps	Galvanized Steel
Inside/Outside Liner	Galvanized Steel
Potting	Polyurethane
Gasket	EPDM rubber

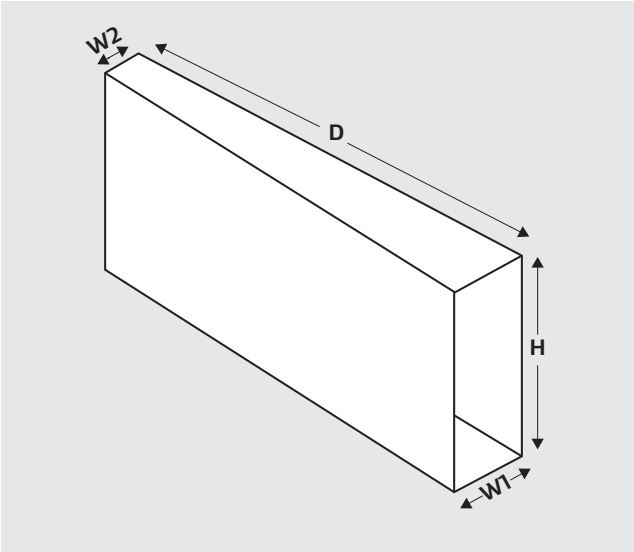
Application Performance

Property	Value
Filter Efficiency	E12 according to EN 1822, Min. 99.5 % @ MPPS (Most Penetrating Particle Size)
Coalescer Media Efficiency	G4 according to EN 779:2009
Wet Burst Pressure	
TCV039	≥ 6250 Pa (25 in wg)
TCV040	≥ 6250 Pa (25 in wg)
Initial Pressure Drop	
TCV039	215 Pa @ 2550 m³/h
TCV040	215 Pa @ 2550 m³/h
Temperature Range	
TCV039	-40 °C to +65 °C (-40 °F to +149 °F)
TCV040	-40 °C to +75 °C (-40 °F to +167 °F)
Recommended Maximum dP	1000 Pa (4 in wg)
Humidity Range	0 to 100% relative humidity
Flame Retardance*	Gore Turbine Filters media are subjected to surface flame exposure (DIN53438-3). They are self-extinguishing and correspond to fire class F1.

*Applicable to part number TCV040

Dimensions

Part Number	Depth	Height	Width 1	Width 2
TCV039	1225 mm (without gasket)	611 mm	246 mm	165 mm
TCV040	1225 mm (without gasket)	611 mm	246 mm	165 mm



Operational Mode

Pulse cleanable and static

All data expressed as typical values. Please contact W. L. Gore & Associates directly to confirm current information and to verify data for a specific part number. Specifications are subject to change.

Contact a Gore application engineer for assistance in determining the appropriate GORE® Turbine Filter for your specific application.

FOR INDUSTRIAL USE ONLY. Not for use in food, drug, cosmetic or medical device manufacturing, processing, or packaging operations.

All technical information and advice given here are based on Gore's previous experiences and/or test results. Gore gives this information to the best of its knowledge, but assumes no legal responsibility. Customers are asked to check the suitability and usability in the specific application, since the performance of the product can only be judged when all necessary operating data are available. The above information is subject to change and is not to be used for specification purposes. Gore's terms and conditions of sale apply to the sale of the products by Gore.

Covered by the following patents: EP 16741441, US 7501003, US 8147583

GORE, *Together, improving life*, and designs are trademarks of W. L. Gore & Associates. © 2017-2025 W. L. Gore & Associates, Inc.

AMERICAS

W. L. Gore & Associates, Inc.
101 Lewisville Road,
Elkton, MD 21921 USA
T +1 410 392 3300

E turbinefilters@wlgore.com
gore.com/turbinefilters

EUROPE

W. L. Gore & Associates GmbH
Hermann-Oberth-Str. 26
D-85640 Putzbrunn Germany
T +49 89 4612-2211

MIDDLE EAST

W. L. Gore & Associates GmbH
Middle East - Abu Dhabi
Al Wahda City Tower, 20th floor,
Royal Business Center
732 Hazza' Bin Zayed The First street, E19
Al Nahyan, Abu Dhabi UAE
T +971 2 5089444

