

## Case Study

# GORE® LOW DRAG Filter Bags: Silicomanganese Ferroalloy Production, Emalahleni, South Africa

## Challenge

Transalloys (Pty) Ltd currently uses five submerged arc furnaces to produce silicomanganese (SiMn) at a capacity of 180,000 tons per year. Transalloys was looking to expand its production capabilities, requiring more capacity for air pollution control. Rather than build larger baghouses — an investment that would also require larger fans and more new equipment — Transalloys chose to investigate the potential APC capacity increase it could achieve with GORE LOW DRAG Filter Bags.

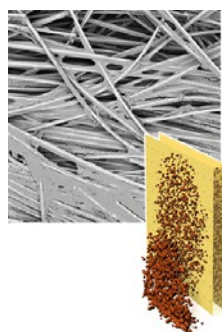
## Solution

In its investigation of Gore's solution, Transalloys performance tested the new filter technology in one of its baghouses. GORE LOW DRAG Filter Bags were installed in one of the baghouse's eight compartments, while two adjacent compartments were fitted with standard ePTFE membrane filter bags, both new and previously used. The pressure differentials and relative flows through each compartment were monitored to determine the capacity increase achievable with Gore's filter bags.

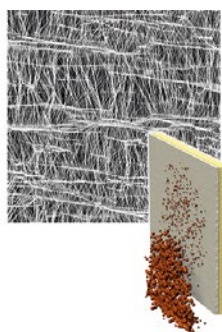


<b>Application</b>	Silicomanganese (SiMn) production
<b>Process</b>	Submerged arc furnace
<b>Filter material</b>	GORE LOW DRAG Filter Bags
<b>Plant capacity</b>	Increasing
<b>Gas flow rate</b>	120,000 Nm <sup>3</sup> /hr
<b>Operating temperature</b>	180 °C (up to 250 °C)
<b>Total filter area</b>	5,460 m <sup>2</sup>
<b>Air-to-cloth ratio</b>	34 Am/h (0.6 Am/min)
<b>Differential pressure</b>	2.06 kPa

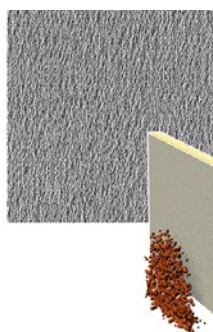
Conventional Fabrics



Standard Membrane



GORE LOW DRAG  
Filter Membrane

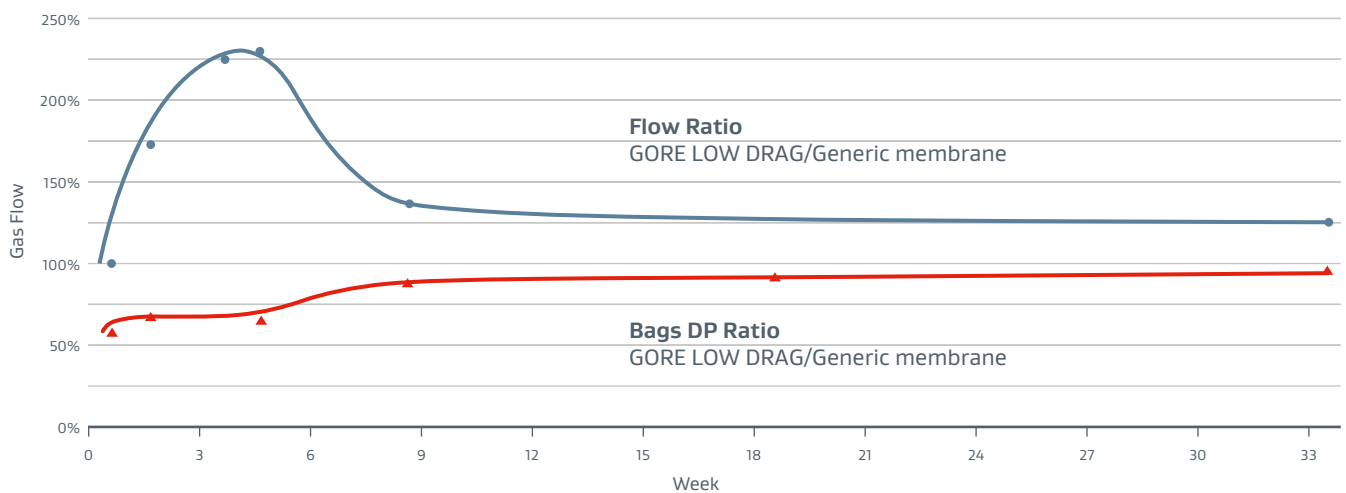


## Result

After 33 weeks of testing, the GORE LOW DRAG Filter Bags continued to provide approximately 26% more gas flow than either of the other test compartments at comparable pressure drops, with fewer emissions overall. The Gore filter bags also delivered an excellent response to start-up and to the cleaning system.

By providing additional flow capacity without adverse effects to bag life or emissions, the GORE LOW DRAG Filter Bags allow Transalloys to consider either saving electrical (fan) energy at current flow rates or potentially increasing system flow rates to accommodate greater furnace production.

### Flow Ratio: GORE LOW DRAG Filter Bags vs. standard bags (new)



**FOR INDUSTRIAL USE ONLY. Not for use in food, drug, cosmetic or medical device manufacturing, processing, or packaging operations.**

All technical information and advice given here are based on Gore's previous experiences and/or test results. Gore gives this information to the best of its knowledge, but assumes no legal responsibility. Customers are asked to check the suitability and usability in the specific application, since the performance of the product can only be judged when all necessary operating data are available. The above information is subject to change and is not to be used for specification purposes. Gore's terms and conditions of sale apply to the sale of the products by Gore.

GORE, *Together, improving life* and designs are trademarks of W. L. Gore & Associates. © 2022 W. L. Gore & Associates, Inc.