

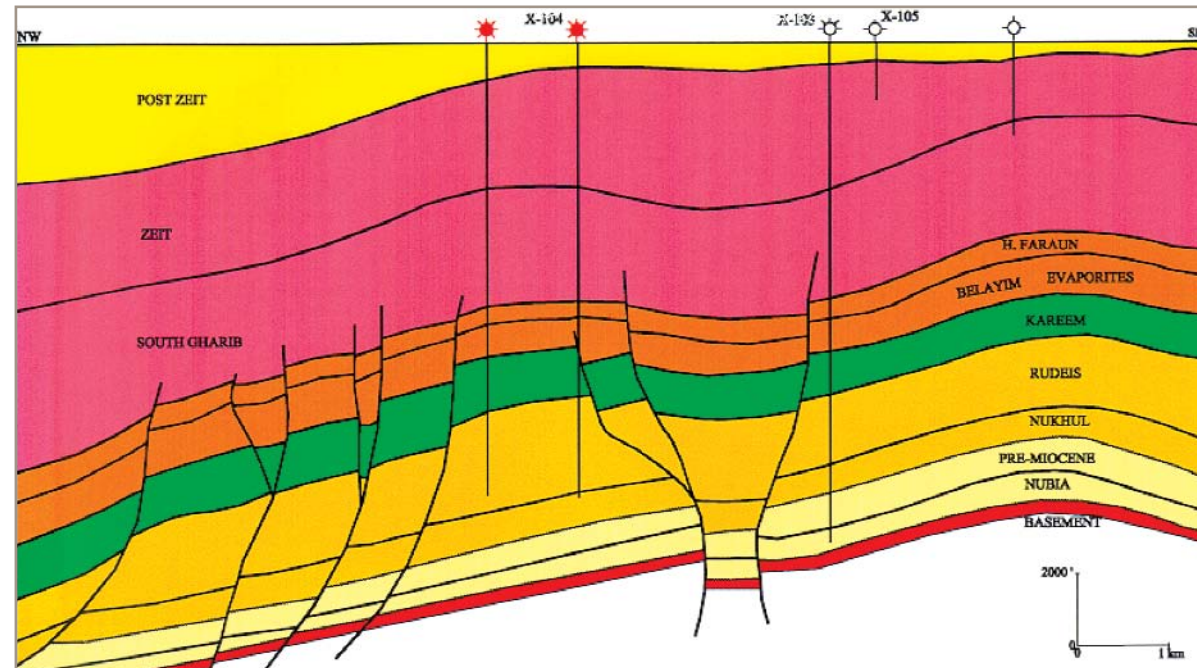


Sub-salt: Delineating prospective areas for future development



GORE™ Survey Area

Egypt, onshore



General Cross Section of the Gulf of Suez Region

PERIOD	EPOCH	FM.	DEPTH (FT)	LITHOLOGY	REMARKS
TERTIARY	MIOCENE	MIDDLE UPPER	0 - 1000	SS, Gypsum	Mostly SS & Gypsum
		ZEIT	1000 - 2000	Anhydrite, Salt streaks	Mainly Anhydrite w/Salt Streaks
MIOCENE	SOUTH GHARIB	2000 - 3000	Salt	Mainly Salt	
	MIDDLE	3000 - 4000	Shale, SS streaks	Shale w/SS Streaks	
MIOCENE	LOWER	4000 - 5000	RUDEIS, NUKHUL	RUDEIS, NUKHUL	
	UPPER	5000 - 6000	PRE-MIOCENE, NUBIA	PRE-MIOCENE, NUBIA	
CRETACEOUS		6000 - 7000	BASEMENT	BASEMENT	

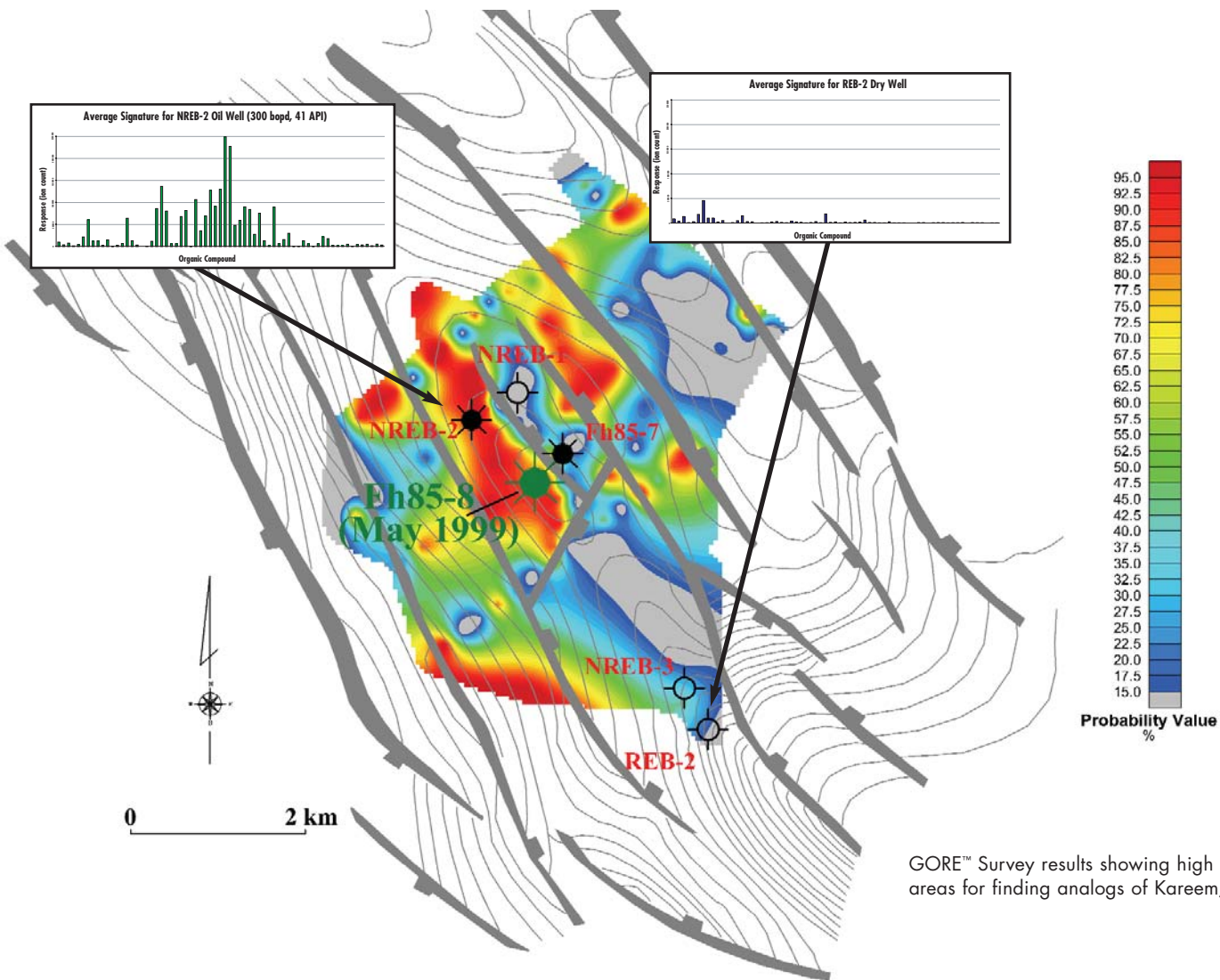
Legend	
	Anhydrite
	Salt
	Shale
	Sand
	Limestone

Stratigraphic column for the Gulf of Suez Region

Geology:

- Fractured sub-salt rift basin
- Target: Miocene Kareem and Rudeis Fms.
- Targets are overlain by 8000 ft of evaporitic salt and anhydrite sequences with interbeds of shale





Survey Summary

- 6 transects; 35 km² coverage
- 100 grid samples; 250 and 500 m spacing

Survey Results

- GORE™ Survey was able to detect hydrocarbon microseepage through thick salt sequences
- The next well drilled on GORE™ Survey data (FH85-8) produced 800 bopd; the highest production rate in the region

GORE™ Survey results showing high probability areas for finding analogs of Kareem/Rudeis oil

GORE™ SURVEYS REDUCE RISK – IMPROVE SUCCESS.



www.gore.com/surveys

W. L. Gore & Associates, Inc.
 100 Chesapeake Blvd.
 PO Box 10 • Elkton, MD 21922 USA
Phone: 1-800-542-3428
 1-410-392-7600
Fax: 1-410-506-4780

SALES OFFICES:
Europe: +49-89-4612-2198
Houston: 1-281-405-5540
San Francisco: 1-415-648-0438
Email: exploration@wlgore.com

For more information on reducing risk and improving success with GORE™ Surveys, see Potter, R. W. II et al., Significance of Geochemical Anomalies in Hydrocarbon Exploration: One Company's Experience, 1996, AAPG Memoir 66, P. 431 - 439.

The optimal performance of any Gore product is dependent upon how it is incorporated into the final device. Please contact one of our technical sales associates for application assistance.
 GORE and designs are trademarks of W. L. Gore & Associates
 © 2004 W. L. Gore & Associates, Inc. 000.0 09/04