



Packaging Vents

D3 SC1 MOLDED COMPONENTS

D3 SC1 Molded Components for containers up to 1 l

HOW DO GORE® PACKAGING VENTS WORK?

GORE® Packaging Vents offer the best combination of liquid resistance and airflow through the use of expanded polytetrafluoroethylene (ePTFE). The material's microporous nature allows airflow and equalizes pressure, even after contact with high viscosity or low surface tension liquids.

DESCRIPTION

Polypropylene plastic housing with a 100% ePTFE membrane that can be engineered with a variety of different properties to meet the needs of the specific application.

PRODUCT INFORMATION

D3 SC1 Molded Components	
Laminate/Membrane	CVL-SC1 Oleophobic ePTFE GORE™ Membrane
Plastic Material	Polypropylene gray
Water Entry Pressure	>0.4 bar
Typical airflow at $\Delta p = 70$ mbar	0.42 l/h
Part Number	CMF300246

TYPICAL APPLICATIONS

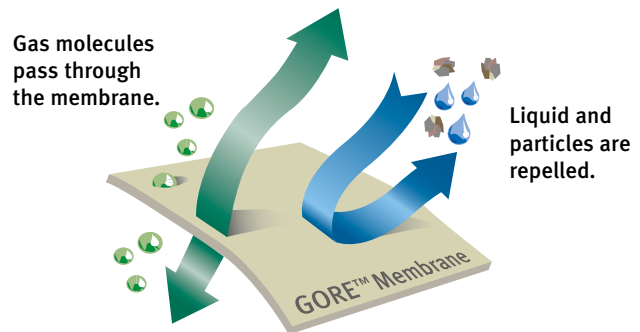
Venting of containers for consumer products containing:

- Bleach
- Peracetic acid and peroxide based formulations as well as liquids containing organic solvents and surfactants



REALIZE THE BENEFITS

- **Prevent containers from bursting or collapsing** by equalizing pressure
- **Maintain a leak tight container**
- **Continue to vent** even after exposure to liquids containing organics, surfactants, oils and solvent based liquids
- **Chemically inert;** ePTFE GORE™ Membrane is ideal for a variety of applications
- **Designed for automated assembly**



GORE® PACKAGING VENTS BREATHE WHILE REPELLING LIQUID AND PARTICLES.



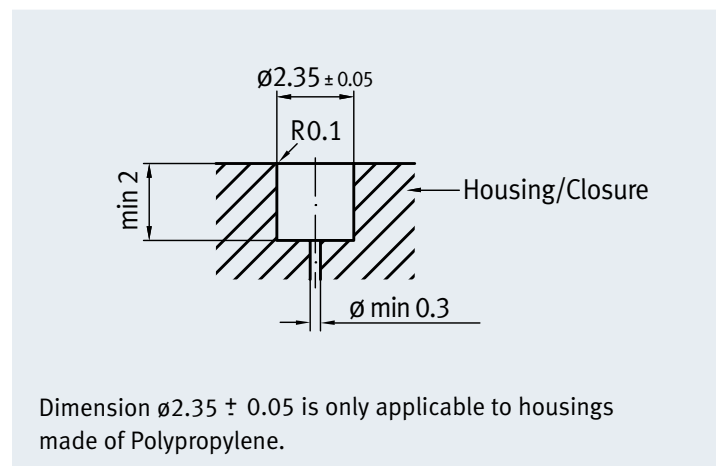
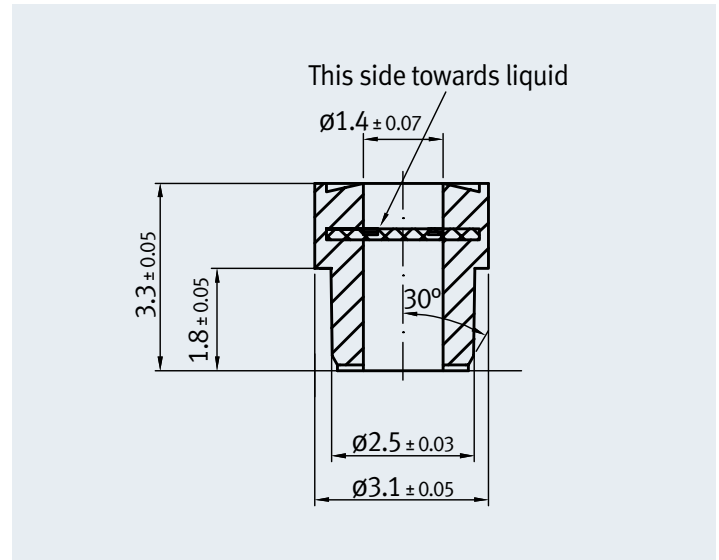
Packaging Vents

D3 SC1 MOLDED COMPONENTS

INSTALLATION

Samples of GORE® Packaging Vents molded components are available for immediate shipment, to assist you in testing their suitability for your specific application.

Contact a Gore representative for assistance in determining the best GORE® Packaging Vent for your application, or for help in validating your packaging design and providing an Application Testing Sheet.



INTERNATIONAL CONTACTS

Australia	61.2.9473.6800	Mexico	52.81.8288.1281
Benelux	49.89.4612.2211	Scandinavia	46.31.706.7800
China	86.21.5172.8299	Singapore	65.6733.2882
France	33.1.5695.6565	South America	55.11.5502.7800
Germany	49.89.4612.2211	Spain	34.93.480.6900
India	91.22.6768.7000	Taiwan	886.2.8771.7799
Italy	39.045.6209.240	United Kingdom	44.1506.460123
Japan	81.3.6746.2572	USA	1.410.392.4440
Korea	82.2.393.3411		

FOR INDUSTRIAL USE ONLY. Not for use in food, drug, cosmetic or medical device manufacturing, processing, or packaging operations.

All technical information and advice given here is based on Gore's previous experiences and/or test results. Gore gives this information to the best of its knowledge, but assumes no legal responsibility. Customers are asked to check the suitability and usability in the specific application, since the performance of the product can only be judged when all necessary operating data are available. The above information is subject to change and is not to be used for specification purposes.

Gore's terms and conditions of sale apply to the sale of the products by Gore.

GORE and designs are trademarks of W. L. Gore & Associates
© 2011 W. L. Gore & Associates, Inc.

W. L. Gore & Associates, Inc.

401 Airport Road • P.O. Box 1550 • Elkton, MD 21922-1550 • USA
Phone: 410.392.4440 • Toll-Free: 800.637.4449 • Fax: 410.506.8749 (US)
Email: packvent@wlgore.com

gore.com/packvents

