

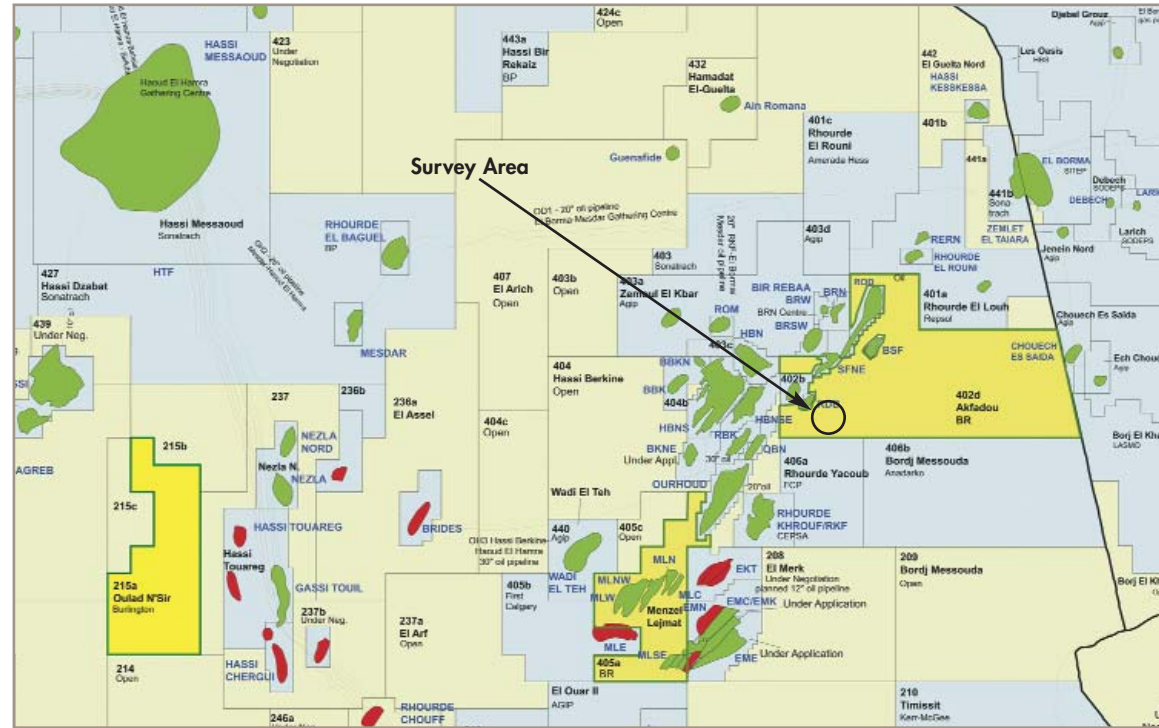


## Structural trap: Delineating oil reservoirs

### Algeria, Berkine Basin



GORE™ Survey Area



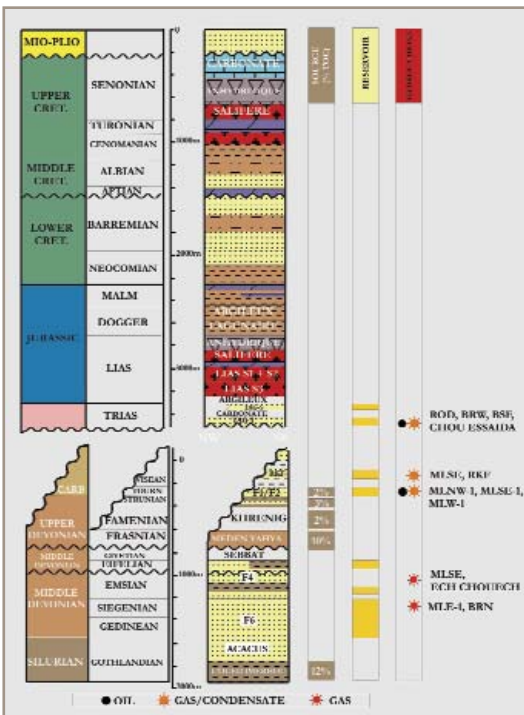
Berkine Basin Concessions Map

### Geology:

- 4-way structural closure
- Target: Triassic TAG-I sandstone
- Sources: Devonian Frasnian shale and Silurian Tannezuft shale
- Top seal: thick sequence of Liassic salts and evaporates
- Topography: Extensive sand dunes with patches of gypsum



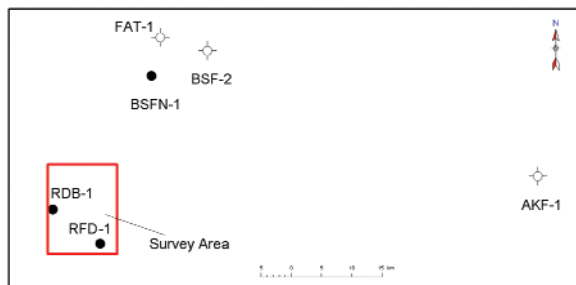
Field Area



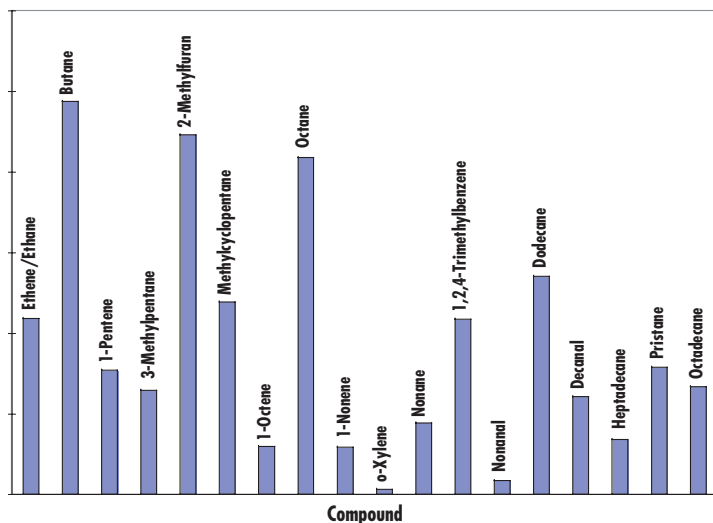
Stratigraphic column



## Structural trap: Delineating oil reservoirs



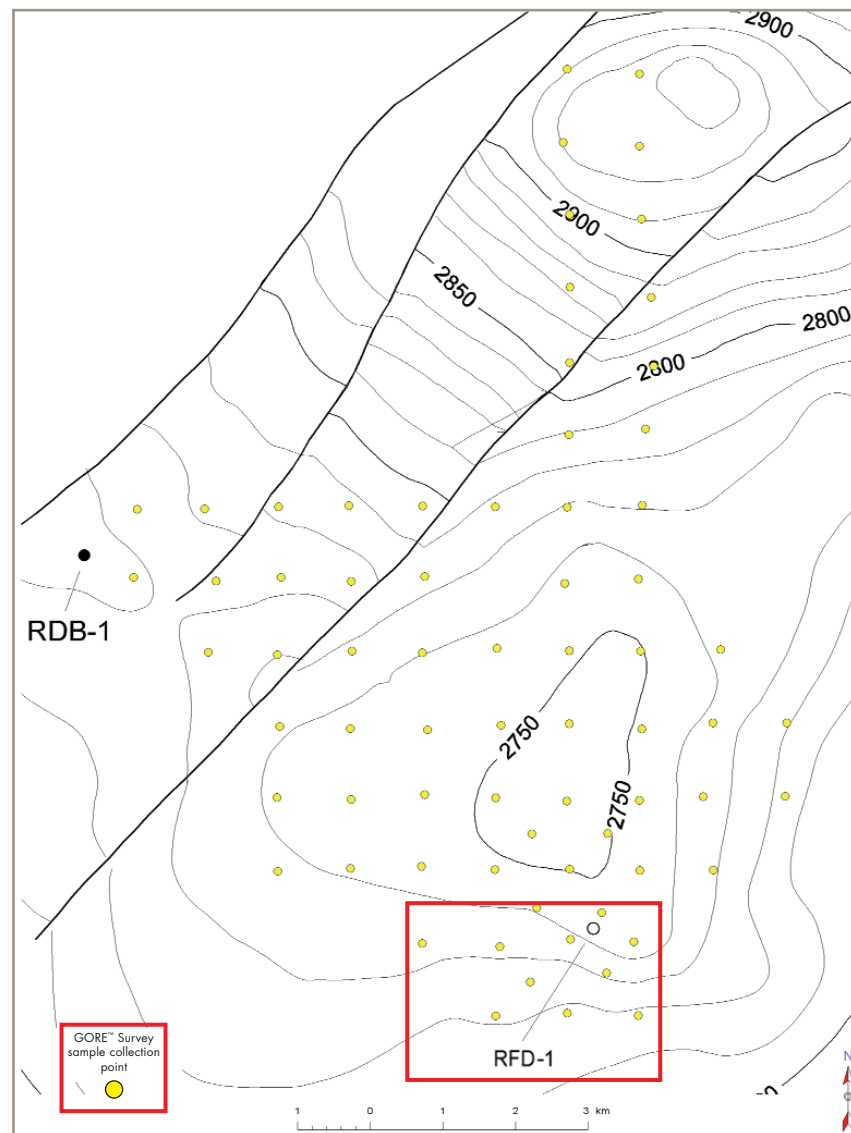
Model well locations in relation to the survey area



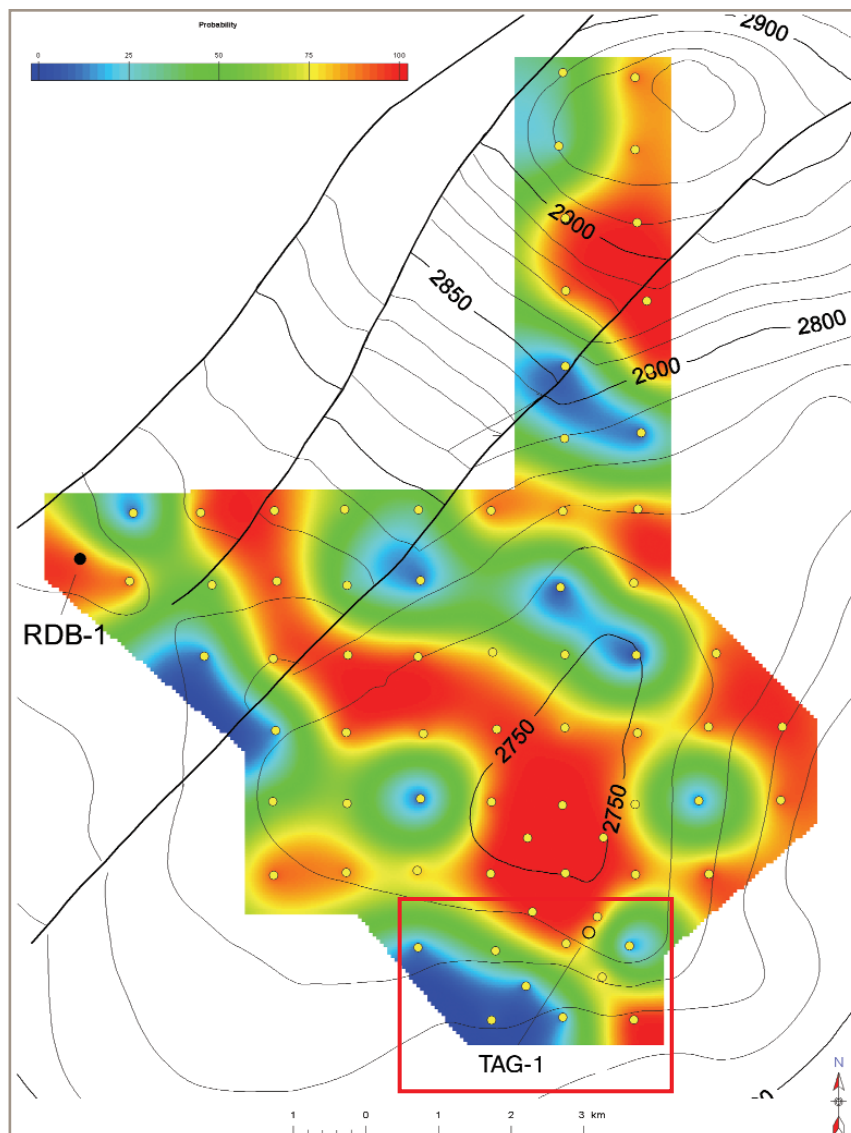
The detected compounds used to differentiate Oil vs. Background (dry) character

### Survey Summary

- semi-regular grid pattern w/ ~1 km spacing
- 72 grid samples; 5 model well sites
- 65 km<sup>2</sup> coverage



Map showing top of triassic TAG-1 structure, faults, the client's proposed well (RFD-1) and the GORE™ Survey grid



GORE™ Survey results. The red areas indicate geochem anomalies which reflect a high probability of hydrocarbon occurrence

### Survey Results

- Results indicate that there is a large geochem anomaly that closely corresponds to the TAG-1 structure
- The client drilled the TAG-1 location which was on the edge of the geochemical anomaly, located on the downdip edge of the seismic mapped structure. The results of drilling the well was the discovery of 3 meters of net oil pay in the TAG-1, which was not completed for economic reasons
- A second high probability geochemical feature located in the NE part of the survey warrants further evaluation as a stratigraphic trap possibly in a deeper Carboniferous formation

**GORE™ SURVEYS** REDUCE RISK – IMPROVE SUCCESS.



[www.gore.com/surveys](http://www.gore.com/surveys)

**W. L. Gore & Associates, Inc.**  
100 Chesapeake Blvd.  
PO Box 10 • Elkton, MD 21922 USA  
**Phone:** 1-800-542-3428  
1-410-392-7600  
**Fax:** 1-410-506-4780

**SALES OFFICES:**  
**Europe:** +49-89-4612-2716  
**Houston:** 1-281-405-5540  
**San Francisco:** 1-415-648-0438  
**Email:** [exploration@wlgore.com](mailto:exploration@wlgore.com)

For more information on reducing risk and improving success with GORE™ Surveys, see Potter, R. W. II et al., Significance of Geochemical Anomalies in Hydrocarbon Exploration: One Company's Experience, 1996, AAPG Memoir 66, P. 431 - 439.

The optimal performance of any Gore product is dependent upon how it is incorporated into the final device. Please contact one of our technical sales associates for application assistance.  
GORE and designs are trademarks of W. L. Gore & Associates  
© 2004 W. L. Gore & Associates, Inc. 000.0 11/04